

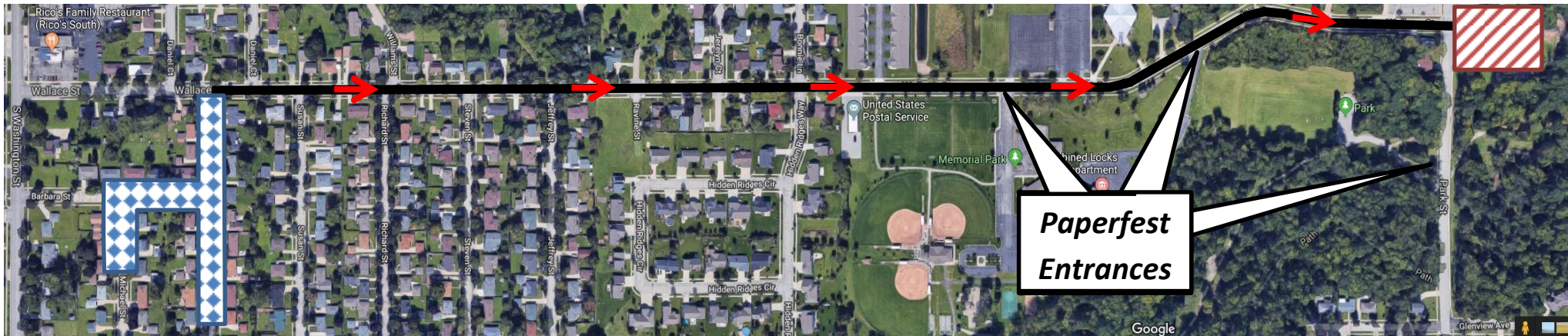
# Paperfest

Combined Locks 100 Years Celebration

SUNDAY, JULY 18<sup>TH</sup> 2021 - NOON



## COMBINED LOCKS CENTENNIAL PARADE ROUTE



**PARADE ROUTE** – The parade will follow Wallace St. starting at Margret St. and ending at Lindberg Park on Park St.

**PARKING RESTRICITONS AND STREET CLOSINGS** – Parking will be available along village streets and at Kimberly High School and Jansen Elementary School. Please be courteous of those around you. No Parking will be posted and enforced along the Parade Route (Wallace St), in the Staging Area (Margret St, Barbra St, & Michael St.), and at the Finish/Cleanup Area (Lindberg Park) starting Sunday Morning at 7am. Road Closures will be in effect 10 minutes prior to the Parade starting at Noon. The Parade route will restrict traffic on and across Wallace Street from Margret Street to Park Street from Noon until approximately 1pm. The Staging area will be closed to through traffic starting at 11am. Vehicles parked in restricted areas after 10am will be towed at the owner's expense. Residents and visitors, please plan accordingly. Anyone with questions regarding the traffic plan may contact Combined Locks Public Safety at: 920-788-7740